

MyEquipAuctions

INDUSTRIAL DIVISION .com

April 10, 2023

INDUSTRIAL
AUCTIONS



PUBLIC ONLINE AUCTION

SURPLUS TO ONGOING OPERATIONS OF BOKUM TOOL CNC LATHES, MILLS, GRINDERS & MORE! EVERYTHING MUST GO!

ONLINE AUCTION CLOSES: APRIL 11TH - STARTING 10 AM ^{EST}

INSPECT ONSITE & BID ONLINE ONLY- TIMED AUCTION

INSPECTION BY APPOINTMENT OR SPECIAL ARRANGEMENT ONLY

32301 Dequindre Rd., Madison Heights, MI 48071 • 32388 Edward Ave., Madison Heights, MI 48071



Mighty Comet 5-Axis CNC Vertical Mill Model 1000P



Femco Durga-12E CNC Lathe w/ Bar Feed Fixture



WMW Cylindrical Grinder SA 5X630



Bridgeport EZ Surf CNC Grinder



Bryant Center Hole Grinder



Okuma LB15 CNC Lathe



**Brown & Sharpe No.13
Universal Grinder**



Asset Management Group

20501 Hoover St. • Detroit, MI 48205 USA

Ph: 313-499-6490 • Fx: 313-839-9600

www.amgrouponline.com • Chase@amgrouponline.com

Chase Thornton Ph: 313-499-6490

Online Bidding at
BidSpotter



50+ HIGH END CNC MACHINES CNC CONSIGNMENT ONLINE AUCTION



Roders RFM 1000 High Speed 3-Axis
CNC Vertical Machining Center

**75 E Palatine Road
Prospect Heights, IL 60070**

**BID ONLINE AT:
BidSpotter**

**BEGINS: TUES, MARCH 28TH • 9:00 AM CST
ENDS: WED, APRIL 12TH • 10:00 AM CST**



Haas DT-2 4-Axis CNC Drill/Tap
Vertical Machining Center



Mazak Variaxis 630 5-Axis CNC
Vertical Machining Center



7' x 25' Motion Master MB-725C
Heavy Duty 3-Axis CNC Router



Toyota VF1680 Heavy Duty 50-Taper
CNC Vertical Machining Center



Mazak QTN-250MSY CNC Lathe
w/Sub Spindle



Haas VF2-YT CNC 3-Axis
Vertical Machining Center



10" x 20" Haas SL-20T CNC
Turning Center w/Live Tooling



Elumatec SBZ-122/10 CNC Profile
Machining Center/Router



Mori Seiki NL2500SY700 CNC
Lathe Turning Center

Visit Our Website for Listing, Updates, and Photos
www.premierarg.com

DO YOU HAVE MACHINES TO SELL???
CALL 312-280-1234

Go to: www.premierarg.com for further updates

Need an auction? Give us a call
312-280-1234



MACHINES FOR SALE?
CALL 312-280-1234

REGISTER & BID ONLINE - Buyers Premium: 18%

www.premierarg.com

Premier License: 044000209 Glenn Gray License: 041000721

Premier Asset Recovery Group: 77 E. Palatine Rd., Prospect Heights, IL 60070

312-280-1234 • info@premierarg.com

**2
DAYS**

AUCTIONS

WORLD-CLASS TOOL & DIE MANUFACTURING FACILITY OWNERS RETIRING - COMPLETE LIQUIDATION

FEATURING: LATE MODEL VERT., HORIZ. & BRIDGE-TYPE MACHINING CENTERS; LATE MODEL MAKINO WIRE EDM'S; HIGH QUALITY TOOLROOM MACHINERY; (2) LARGE BLANCHARD VERT. ROTARY SURFACE GRINDERS; DANLY MDL. S2-800-60-120 QDC STRAIGHT SIDE PRESS; BRIDGE CRANE SYSTEMS; FORKLIFTS; HUGE QTY. PRECISION MACHINE ACCESSORIES; MATERIAL HANDLING EQUIP.; MUCH MORE!

INSPECTION:

Monday & Tuesday,
April 10 & 11, 9:00 A.M. to
4:00 P.M. Each Day

Assets Located at

TOOL & DIE SPECIALTIES, INC.
1005 OLD PHILADELPHIA ROAD, ABERDEEN, MARYLAND 21001

18% BUYER'S
PREMIUM
WILL APPLY

**DAY 1: WEDNESDAY, APRIL 12 • 11:00 A.M. EDT
LIVE WEBCAST AUCTION (NO ONSITE BIDDING)**

72" CHUCK



BLANCHARD MDL. 36HD-66
VERTICAL ROTARY SURFACE GRINDER

**48" UNDER
WHEEL**

2011



AMERA-SEIKI MDL. VB-3 BRIDGE TYPE VERTICAL MACHINING CENTER

**2,829
HOURS**

**ROLLING
BOLSTER**



DANLY MDL. S2-800-120-60 QDC
800 T. STRAIGHT SIDE PRESS

**REWired
2011**

**DAY 2: THURSDAY, APRIL 13 • TIMED ONLINE AUCTION • BIDS START CLOSING
AT 11:00 A.M. EDT**



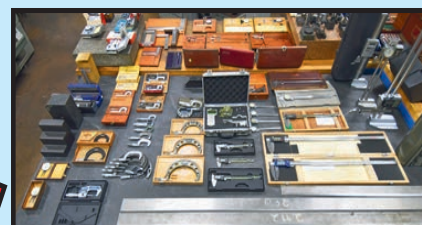
ROLLER DRAWER TOOL CABINETS

**HUGE
SELECTION**



10' CONEX BOXES

**4
AVAILABLE**



ASSORTED PRECISION INSTRUMENTS

FOR BIDDING AT THIS AUCTION. Go to www.pmi-auction.com and click on BidSpotter
or proxibid on our calendar page for this auction sale.

Read Partial Terms
& Conditions on Page 11

Sale Conducted By:

PLANT & MACHINERY INC.
AUCTIONEERS • APPRAISERS • LIQUIDATORS • REAL ESTATE

AUCTIONEER: Ronald G. Moore
HOUSTON • DALLAS • ST. LOUIS

Headquarters:

1304 Langham Creek Drive, Suite 454
Houston, Texas 77084

PHONE: (713) 691-4401

FAX: (713) 672-7905

E-MAIL: pmi@pmi-auction.com
WEBSITE: www.pmi-auction.com

2

WEBCAST AUCTIONS



WEBCAST AUCTION OF HIGH VOLTAGE TEST EQUIPMENT MANUFACTURER FEATURING VPI, PRESSURE CHAMBERS & TANKS, HD OIL FILTERS, PUMPS & PURIFIERS, WINDING MACHINES, INDUSTRIAL OVENS & PAINT BOOTHS, FABRICATION & TOOLROOM MACHINERY, LIFT TRUCKS UP TO 8,000 LB, BOOM & SCISSOR LIFTS, AIR COMPRESSORS, RACKING AND LATE MODEL OFFICE FURNITURE

HIPOTRONICS, INC.

1650 Route 22 North • Brewster, NY 10509

SALE DATE: WEDNESDAY, APRIL 12TH AT 10:00 AM

INSPECTION: Day Prior from 10:00 AM to 4:00 PM or By Appointment with ryan@cia-auction.com

FEATURING: VPI SYSTEM, VACUUM PRESSURE CHAMBERS AND TANKS

- IMPREX VACUUM PRESSURE IMPREGNATION SYSTEM
- (3) HD VACUUM AND PRESSURE CHAMBERS
- MISCELLANEOUS HOLDING TANKS UP TO 2,000 GALLONS

VACUUM PUMPS AND OIL FILTERS AND PURIFIERS

- KEENE FILTRATION MODEL 865-HV-1600 OIL PROCESSOR
- (3) HD KINNEY HIGH VACUUM PUMPS
- CHONGQING ZYD-100 HIGH EFFICIENCY TWO-STAGE VACUUM OIL PURIFIER

WINDING MACHINES

- (2) BROOMFIELD LABORATORIES SERIES 600 WINDING MACHINES
- (2) BOBIFIL ER1700 WINDING MACHINE
- BOBIFIL ER1200 WINDING MACHINE
- ESSEX 108 WINDER

INDUSTRIAL OVENS AND PAINT BOOTHS

- BINKS LARGE DRIVE-IN PAINT BOOTH
- NEW ENGLAND OVEN AND FURNACE LARGE HD RAILCAR OVEN
- GRIEVE B3-450 WALK-IN HIGH TEMP ELECTRIC OVEN

FABRICATION AND TOOLROOM MACHINERY

- AMADA ARIES 245 CNC TURRET PUNCH WITH TOOLING
- STRIPIT SUPER 30 SINGLE STATION PUNCH
- 3/16" X 6" NIAGARA POWER SQUARING SHEAR
- 2 HP BRIDGEPORT VERTICAL MILL WITH ACURITE III DRO

- 37" TIMESAVER 337 M-1 SPEEDBELT SANDER
- IKEDA RMS-9 RADIAL ARM DRILL
- 8" X 18" KENT KGS-250AH SURFACE GRINDER
- (2) KALAMAZOO HORIZONTAL BAND SAWS
- (2) CUSTOM MADE SHEAR LINES WITH (2) 1,000 LB. AMERICAN STEEL COIL REELS
- LARGE QUANTITY TOOLROOM MACHINERY: BLAST CABINET, MILLER WELDERS, PUNCHES, ARBOR PRESSES, BAND SAWS, DRILL PRESSES, SANDERS, GRINDERS, WELD TABLES, H-FRAME PRESS, KICK SHEARS AND MORE

LIFT TRUCKS, SCISSOR LIFTS, SWEEPERS, VEHICLES AND RELATED

- (3) CLARK LP GAS LIFT TRUCKS FROM 4,000 LB. TO 8,000 LB.
- 4,000 LB. HYSTER E40XL-27 ELECTRIC LIFT TRUCK
- JLG E300AJ JIBPLUS ELECTRIC BOOM LIFT
- GENIE Z-45/22 MP ELECTRIC BOOM LIFT
- (2) JLG 1930 ES ELECTRIC SCISSOR LIFT
- (2) ADVANCE AND TENNANT WALK BEHIND FLOOR SCRUBBERS
- FORD F350 PICKUP TRUCK (2002)
- RAM 2500 FLATBED PICKUP TRUCK (1998)

SUPPORT EQUIPMENT

- (3) SULLAIR AIR COMPRESSORS UP TO 30 HP
- LARGE QUANTITY ADJUSTABLE BEAM PALLET RACK
- OVER 100 LOTS OF MISCELLANEOUS SUPPORT ASSETS: CARTS, LADDERS, AIR HOSE REELS, LIFT TABLES, SHOP VACS, CHAINS, SLINGS, SHELVING, BANDING CARTS, DUMP HOPPERS, SCISSOR LIFT TABLES, ETC.

OFFICE FURNITURE AND RELATED

- GLOBAL HEADQUARTERS FEATURING LATE MODEL CUBICLES, CHAIRS, BREAK ROOM, CONFERENCE ROOMS AND MORE



WEBCAST AUCTION OF HD MACHINING & FABRICATING COMPANY FEATURING HORIZONTAL & VERTICAL BORING MILLS, CNC MILLS, (7) LATHES UP TO 36" X 17", PLANERS, GRINDERS, SAWS, TOOLROOM, WELDING PLUS LOTS OF MISC. TOOLING & ACCESSORIES



KORTZENDORF MACHINE & TOOL COMPANY

1450 Sunday Dr. • Indianapolis, IN 46217

SALE DATE: TUESDAY, APRIL 18TH STARTING AT 10:00 AM

INSPECTION: Day Prior from 10:00 AM to 4:00 PM

FEATURING:

HORIZONTAL BORING MILLS

- (2) 4" LUCAS MODELS 42B-60 AND 441B-72 BORING MILLS W/ DROS
- 3" UNIVERSAL BORING MILL W/ DRO

VERTICAL BORING MILL

- 77" BULLARD VERTICAL BORING MILL
- 54" G&L HYPRO 54BM VERTICAL BORING MILL

VERTICAL MILLS

- (2) LAGUN LAUNMATIC MODEL 250 CNC MILL
- HURCO KM3P CNC MILL
- (3) BRIDGEPORT MILLS UP TO 2 HP WITH DRO'S

HORIZONTAL LATHES

- 36" X 17" TOS MODEL SU80A LATHE
- 24" X 8" LEBLOND LATHE
- 24"/35" X 72" CLOVER GAP BED LATHE
- 20"/30" X 120" TARNOW GAP BED LATHE
- 19" X 60" SUMMIT LATHE
- 16" X 40" VICTOR 1640B LATHE
- 13" X 40" PRINCE LATHE

PLANERS

- 60" X 24" G.A. GRAY WIDENED PATTERN DOUBLE HOUSING PLANNER
- 72" X 14" G.A. GRAY WIDENED PATTERN DOUBLE HOUSING PLANNER
- 21-5/8" X 72" ROCKFORD OPEN SIDE PLANNER

GRINDERS

- 36" BLANCHARD NO. 18 ROTARY SURFACE GRINDER

- 12" X 36" NORTON OD GRINDER

- (2) SURFACE GRINDERS BY DOALL AND BOYAR-SCHULTZ UP TO 8" X 24"

MACHINING ACCESSORIES AND TOOLING

- LARGE QUANTITY OF MISCELLANEOUS ANGLE PLATES, ROTARY TABLES, RIGHT ANGLE HEAD ATTACHMENT, SPARE CHUCKS, STEADY RESTS, DRILLS, TOOL HOLDERS, VISES, DIVIDING TABLES, SINE PLATES, ETC.

TOOLROOM MACHINERY AND RELATED

- 12" X 60" AMERICAN HOLE WIZARD RADIAL ARM DRILL
- 25" SMITH AND MILLS HORIZONTAL SHAPER
- (3) VERTICAL BAND SAWS BY DOALL, MARVEL AND METALMIZER
- SUNNEN HONE
- KEY SEATER, DRILL PRESSES, SANDERS, GRINDERS, PIPE THREADERS, SAWS
- (7) WELDERS BY MILLER AND ESAB
- 57" W X 25" 7" LONG HD T-SLOTTED LAYOUT TABLE
- INSPECTION EQUIPMENT: HARDNESS TESTER, MICROMETERS, ETC.

PLANT SUPPORT EQUIPMENT

- FORD F600 FLAT BED TRUCK
- (2) CAT LIFT TRUCKS UP TO 6,000 LB.
- 15 HP INGERSOLL RAND AIR COMPRESSOR WITH DRYER



Cincinnati Industrial Auctioneers, Inc. - License No. 63-1983-10439

Jeffrey L. Luggen - License No. 57-1983-33789

Joseph M. Luggen - License No. 2010-0000-19

18% BUYERS PREMIUM IN EFFECT FOR ALL PURCHASES

BidSpotter



**CINCINNATI
INDUSTRIAL
AUCTIONEERS**

auctioneers | appraisers | since 1961

Check our website for ongoing & future auctions!

For Photo Gallery & Sale Catalog & Additional Information Visit:

www.cia-auction.com

5-20-19

BANKRUPTCY AUCTION

STARTS: APRIL 14th
ENDS: APRIL 20th
Medford, NY
Online Bidding

INDUSTRIAL HVAC CO. ASSETS

Commercial/Industrial HVAC Designer/Fabricator/Installer

PARTIAL LIST OF ASSETS:

SHOP

- Duct Fabricating Line: Vicon 52-UC 2-Coil Cradle, 4-Coil Cradle, Engel Unitized Coiling 516UC-UF, Engel Cleat Edge Former DH800-CEF, Engel Roll Forming Machine, M-LM-60-DD, DuroDyne FGMH Multihead PinSpotter, Vicon Wrap Automatic Brake System V516B-FW-AMS, AMS Controls, Transfer Tables
- Vulcan 1600-WJ Waterjet System w/KMT Streamline SL-V 15 STD
- Tormec Tubo-S Tube Forming Machine
- DuroDyne Mach 1 Pinspotter
- Klimawent Extraction System
- Lowm B600 Plate Bending Roll
- Kalamazoo Horizontal Band Saw
- Miller Millermatic 252 Welder
- (2) Miller Millermatic 350P Welder
- Miller Millermatic 140 Auto-Set
- Miller Syncrowave Welder
- Hypertherm PowerMax 45 Welder
- Spot Welder
- Drill Press
- Scotchman 5014-TM Ironworker
- Eagle BPR CPH 40 Angle Bending Roll
- Wallace A410-10 2-Ton Aluminum Gantry Crane
- Iowa Precision Whisper-Loc Coiled Metal Processing System m/n F4H1872
- Iowa Precision Whisper-Loc Coiled Metal Processing System m/n CM-F-DH
- Lockformer Vertical Band Saw
- Overhead Crane
- Cantilever Material Racks
- (2) Vicon Plasma Cutter 12' x 6' w/ Hypertherm PowerMax 1000 G3
- Vicon Plasma Cutter 24' x 6' w/Hypertherm 1000 GB
- Wysong Model 10.5 Shear ¼ Cap
- Engel Turning Vane Form Cutter M-CSF-TV
- Vicon Double Drop-In Uncoiler V-CSF-6
- Graco 207-272 Drum Unloader
- Niagara IB60-10-12 Press Brake
- Niagara Press Brake
- (2) Lion Machinery 1836 Cleatfolders
- 4-22 UB Bender
- Lockformer 18 ga. Pittsburgh Machine
- Lockformer 20 ga. Pittsburgh Machine
- Lockformer Button Cheek Bender
- Lockformer Auto Guide Power Flanger 18 ga. Capacity
- Vicon TDX Rollformer V-TDX
- DuroDyne Flexible Duct Connector Dispenser FDCC-2
- Vermette 520A Manual Material Lift
- Lons 140AR-DV Spot Welder

- Taloc H624 Clinching Machine
- Pexto 3617-C Crimp & Beading Machine
- Niagara No. 180 Crimp & Beading Mach
- Lockformer Bett-Mar Saw 24S
- Engel M-750 Edge Notcher
- Niagara No. 18 Shear Cap: 14 ga. Mild Steel
- Vicon SR-45i Plasma Cutter w/Hypertherm PowerMax 65
- Chicago SBA-104 Press Brake
- Lockformer Transverse Duct Connector System
- Tennsmith Model U48 Hand Brake
- Niagara 11 R&C SHR Circle Cutter
- Vicon V8 8-Station Rollform Machine
- Engel 5-18BD Beading Unit
- Flagler 20GA Pittsburgh Machine
- DuroDyne LS-5 Liner Sizer
- Western Arctronics 30-KVA Spot Welder
- DuroDyne PinSpotter
- Ductmate Industries Angle Bar Cutter
- (7) Genie GS-1930 Elevating Work Platforms
- (2) Genie GR-20 Runabout Lift
- JLG 1230ES Man Lift
- (3) JLG 1930ES Scissor Lift
- Welding Carts / Tanks
- Welding Kits
- ThermalArc PAC 3XR Plasma Cutter
- (2) DuroDyne RH PinSpotters
- (4) Genie Superlift Contractor Material Lifts
- (5) Genie Superlift Advantage Material Lifts
- (2) Genie Superlift Material Lifts
- Gang Boxes / Tool Boxes
- (9) Manual Material Lifts
- Ladders
- Pallet Jacks
- Warehouse & Maintenance Equipment
- Power Tools
- Hand Tools
- Hardware
- Raw Materials & Scrap
- Scaffolding
- Heavy Duty Shelving and Much More...

LIFT TRUCKS

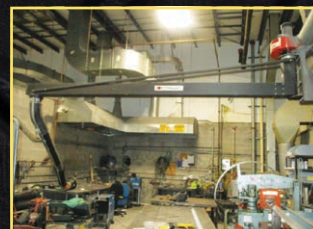
- Mitsubishi ESR24 Ride-On Lift Truck
- Hyster LP Gas Lift Truck 5155XL
- Mitsubishi LP Lift Truck FG625

VEHICLES

- 2021 Jeep EcoDiesel Sahara Wrangler
- 2020 Ram Van
- 2019 Hino Box Truck
- 2019 Ram Van
- 2018 Freightliner Box Truck

AND MORE - SEE WEBSITE

Asset Location: 1165 Station Road, Medford, NY 11763.



SEE WEBSITE FOR DETAILS AND PHOTOS

AUCTIONS...Your Liquidity Solution®

516.349.7022 | MALTZAUCTIONS.COM

Machine Tools, Facility Equipment and Large Quantity of CFM56-3 Parts

Asset Highlights



- Hwacheon Hi-Tech 350A YSMC CNC Machine
- Cincinnati Milicron CNC Machine
- Mazak Quick Turn 280N CNC Machine
- Hydraulic Drive and Flow Stand
- Hydraulic Test Stand
- Large Lathe
- Boring Mill
- 1/4 Ton Crane
- 10 Ton Crane
- Large Inventory of Rotable and Expendable CFM56-3 Parts
- Makino EDNC6 Sinker Ribbing Machine
- Free Standing 1 Ton Cap. Bridge Crane



STARTING: APR 26 - AT 7:00am ET
ENDING: APR 27 - AT 12:00Pm ET

SCAN ME



Asset Locations:

5300 NW 36th Street, Miami, Florida 33122

680 S. Lemon Ave. City of Industry, CA 91789

[www. HGPauction.com](http://www.HGPauction.com)

Metal Fabrication & Woodworking OVER 350,000 sq. ft. 2 Day Timed Online Auction

inscape

CLOSING

2 Locations:

67 Toll Rd • East Gwillimbury, Ontario
15 Tiffany Ave • Falconer, NY

2 DAYS - MAY 2nd & 3rd, 2023

Auction lots begin closing
May 2nd & 3rd • 10:30 AM on both days

Hydraulic & Mechanical Press Brakes



(12) ALL-STEEL 65-175 Ton, 8-12',
(14) CINCINNATI 90 Ton, 6',
(10) WYSONG 60-250 Ton, 6-14',
(3) NIAGARA 90-175 Ton, 12',
(3) AMADARG-100 Ton x 10',
(3) FINN-POWER E-Brakes, 65-100 Ton, 8-10',
CHICAGO D&K 90-Ton x 8' Mod. 68L
CINCINNATI 135 Ton x 10' Mod. 5 Series x 10'
CINCINNATI 135 Ton x 10' Mod. 5 Series
CINCINNATI 200-Ton x 10' Mod. 12 Series x 10'
CINCINNATI 400 Ton x 12 Mod. 13 Series x 12'
*Tooling & Dies

CNC Laser Turret & Punch Presses



AMADA Mod. Apollo II 357
22-Ton/1.5-kW Laser Turret Punch w/
AMADA OSPL-A CNC Control and
Fanuc C1500 AO4B-C805-B32 Laser

AMADA VIPROS 358 KING 33-Ton
CNC Turret Punch Press, w/ FANUC
S18-P CNC Control, Cooling unit

AMADA Pega 357 30-Ton Turret
Punch, ser. AA570707

These well-maintained press brakes have only recently stopped production and come equipped with controls and accessories including: AUTOMEC Autogauge CNC 300 Control, CINCINNATI CNC Control, CINCINNATI Pendant Controls, Push-Button Controls, Foot controls, Safety Cages & Enclosures, TEKSafety Die Blocks

Woodworking Shop

BIESSE Flat Table CNC Router Mod. Rover-A-22-
31-GFT, 2200 x 3100 w/ CNC Control Console,
Outfeed Power Belt Conveyor and Air Knife

BIESSE Flat Table CNC Router Mod. Rover-A-22-
31-GFT, 2200 x 3100 w/ CNC Control Console,
Transfer Table, Overturner

ERNST Buffing Machine mod. BM2/1350, Drying
Oven with Flow-Through Chain Conveyor



Packaging, Stretch Wrappers, Robots, Conveyors



FOX Orbital Wrapping Machine, Mod. ROUNDER 330
with ROACH motorized infeed/outfeed conveyor
FOX Orbital Wrapping Machine, Mod. SS370 with
ROACH motorized infeed/outfeed conveyor
FOX Orbital Wrapping Machine, Mod. ROUNDER 330
with motorized infeed/outfeed conveyor

ORION mod. FA55-7848 Stretch Wrap Machine w/
Push-Button Control and Roller Conveyor Feed System
ORION mod. M67/135 Stretch Wrap Machine
WULFTEC INTERNATIONAL mod. WHP-150 Stretch
Wrap Machine w/ Turntable
LIBERTY Mod. 1000A Stretch Wrap Machine w/ Roller
Conveyor Feed System



Machine Shop

Welding Stations, Spot & Mobile Welders



Compressors & Air Dryers

Material Handling & Storage



Other Assets

Office & Lab



Raw Material, Finished Goods Inventory

TERMS OF SALE: To be sold in Canadian Dollars in Accordance with C3 and Gordon Brothers Terms of Sale as published on our website and in the auction catalog. A Buyer's Premium will apply.

- Over 80 Hydraulic, Mechanical E-Power, Turret & Punch Presses
- Blasting & Spraying Lines
- Woodworking Lines
- Inspection & Touch-Up Line
- Building & Employee Utilities
- Welding & Spot Welding Stations
- Packaging & Wrapping Lines
- Tool Shop, Laboratory, Offices

See the Catalogue and Register at

BidSpotter

Inspection on May 1 or by appointment
Online 3D Tour & Live Video Tours Available

Contact us www.c3.com

+1-514-345-8000 +1-514-638-3007

2

WEBCAST AUCTIONS



WEBCAST AUCTION OF A PLASTIC EXTRUSION FACILITY INCLUDING 65MM MILACRON EXTRUDER, (14) 3.5" EXTRUDERS, BELT PULLERS, FLY KNIFE CUTTERS, SAWS, MELT PUMPS, DRYERS, EDMS, HAAS MINI MILL, INGERSOLL RAND AIR COMPRESSORS & MORE



CRESCENT PLASTICS, INC.

955 E. Diamond Ave • Evansville, IN 47711

100 Miles West of Louisville, KY

SALE DATE: TUESDAY, MAY 2ND STARTING AT 9:00 AM CT

INSPECTION: Monday, May 1st from 10:00am to 4:00 PM or by appointment with joe@cia-auction.com

FEATURING:

- 65MM MILACRON MODEL TC-65 TWIN SCREW EXTRUDER (2005)
- (14) 3.5" SINGLE SCREW EXTRUDERS BY PRODEX, HPM, NRM & MERRITT
- 10' RDN MODEL 20PVS-10 VACUUM SIZING TANK
- (5) 6" X 4' YOUNGSTOWN PLASTIC BELT PULLERS (NEW AS 2011)
- (8) GOODMAN FLY KNIFE CUTTERS & (16) UPACTING TRAVELING EXTRUSION SAWS
- XALOY MODEL JCP1724E JET CLEANER BURN OFF
- (7) LCI MODEL ES-45/45 MELT PUMPS
- MITSUI MODEL DMZ2-240U DRYER W/ HOPPER (2019)
- (10) CONAIR 400 SERIES DRYERS
- 40 HP PULVERIZER W/ DUST COLLECTOR & MAC HOPPER
- (14) GRANULATORS BY AEC & NELMOR
- MAGUIRE/NOVATEC THREE-PART BLENDER (2015)
- AGIE CHARMILLES MODEL F1440SLP CNC WIRE EDM (2008)
- HAAS MODEL TM-2 MINI MILL (2005)
- (2) 200 HP INGERSOLL RAND MODEL SSR-EPE200-2S AIR COMPRESSORS (NEW AS 2007)
- (2) INGERSOLL RAND MODEL TS9A AIR DRYERS (2007)



WEBCAST AUCTION OF COMPLETE AEROSPACE FASTENER MANUFACTURER, NATIONAL HEADERS TO 1", HOT FORGE PRESS, THREAD ROLLERS, POINTERS, TRIMMERS, DRAWERS, MODERN LAB AND TEST EQUIPMENT, TOOLROOM, AIR COMPRESSORS, BRIDGE CRANE, BUSWAY AND SHOP EQUIPMENT

PLANT CLOSED

SAFETY SOCKET

49 Prairie Parkway • Gilberts, Illinois 60136

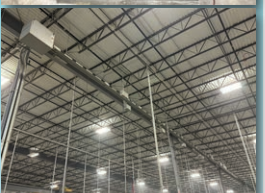
30 Miles west of Chicago O'Hare Airport off I-90

SALE DATE: WEDNESDAY, MAY 10TH STARTING AT 9:00 AM LOCAL

INSPECTION: Day Prior from 10:00 to 4:00 PM or by appointment with jeffjr@cia-auction.com

FEATURING:

- (2) 4" LUCAS MODELS 42B-60 AND 441B-72 (7) NATIONAL COLD HEADERS, MODELS INCLUDE 1" MODEL 1000 3-DIE PROGRESSIVE, 1/2" 4-DIE S-2 BOLT MAKER, MODELS 89/56/34 2-DIE 3-BLOW MACHINES
- 5/8" EW MENN GW120H HIGH SPEED THREAD ROLLER (1993)
- (7) WATERBURY AND HARTFORD THREAD ROLLERS TO 3/4"
- LANDIS AND SENY CYLINDRICAL THREAD ROLLERS
- BOLT POINTERS • BOLT TRIMMER • FILLET ROLL • WIRE UNCOILER • (7) WIRE DRAWERS
- 121 TON SEYI SUTHERLAND FCP-110 GAP FRAME HOT FORGE PRESS
- RANSOHOFF MODEL LEAN-JET WASHER
- COMPLETE MODERN LAB EQUIPMENT AS NEW AS 2022
- 5-TON X 50' X 125' FREE-STANDING CRANE SYSTEM (2013)
- 350' GE SPECTRA SERIES 1600-AMP ELECTRIC BUSS DUCT (2013)
- AIR COMPRESSORS, MODULAR SHOP OFFICES
- CNC TURNING CENTERS
- COMPLETE TOOLROOM
- FORKLIFTS
- TUBS
- OFFICE FURNITURE



18% BUYERS PREMIUM IN EFFECT FOR ALL PURCHASES

Cincinnati Industrial Auctioneers - IN License No. AC63004471 • Jeffrey L. Luggen - IN License No. AU01051612 • Joseph M. Luggen - IN License No. AU11200137



**CINCINNATI
INDUSTRIAL
AUCTIONEERS**
auctioneers | appraisers | since 1961

Check our website for ongoing & future auctions!

BidSpotter

For Photo Gallery & Sale Catalog & Additional Information Visit:

www.cia-auction.com



Complete Body Shop & Wrecker Service Liquidation Auction

TUESDAY, APRIL 11TH • 4 PM | ROWELLAUCTIONS.COM



2110 LOUISVILLE RD, SAVANNAH, GA 31415

Auction Preview: Tuesday, April 4th, 11 AM - 4 PM | Wednesday, April 5th, 11 AM - 4 PM



AUCTION CALENDAR

CHOCOLATE CHIP, PROTEIN BAR & COOKIE DOUGH PLANT

TIMED ONLINE
AUCTION

COMING
IN
APRIL

San Diego,
CA

Formerly of BHU Foods

- Chocolate Chip & Bar Depositing Lines
- Vemag HP-10C and Robot 500 vacuum fillers
- AMF Glen & Hobart Planetary Mixers



BAKERY, RESTAURANT AND BAR FURNISHINGS

TIMED ONLINE
AUCTION

APR.
6TH

Corona &
San Francisco,
CA

Restaurant Equipment and Furniture Formerly of: Marie Callender's Restaurant and Bakery & Seven Stills Brewery and Distillery

- Hobart L-800 Mixer
- Baxter Revolving Tray Oven



STAINLESS TANKS, DICERS, BLENDERS & LOTS MORE

TIMED ONLINE
AUCTION

APR.
19TH

Carlos,
MN

Surplus to the needs of SunOpta Foods

- Urschel Comitrol Cutters
- Westfalia Separator & Decanters
- Aseptic Filling & Packaging Machines
- 30+ Stainless Tanks, Processors & Silos



INDOOR VERTICAL FARMING FACILITY

TIMED ONLINE
AUCTION

APR.
20TH

South San
Francisco,
CA

Agriculture & Packaging Equipment

- Seeding & Vertical Farming Infrastructure
- Robotic Transplanting & Tower Lifting Arms
- Cryogenic Chilling & Retail Packaging Line



Leading Industrial And Commercial Liquidators.
Contact Rabin Worldwide For Your Liquidation And Equipment Needs Today.

Check Rabin.com For More Upcoming Food & Confectionery Equipment Auctions

+1.415.522.5700

Email: info@rabin.com

See it all now at... **rabin.com**

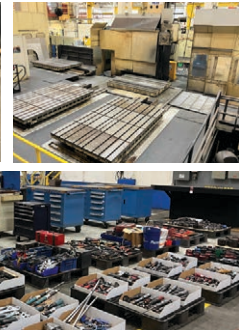
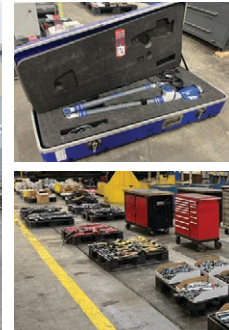
ONLINE AUCTION


PERFECTION
Industrial Sales
perfection.global/auctions

SULZER
Pumps Inc (US)
COMPLETE CLOSURE OF THE PORTLAND MANUFACTURING FACILITY - PHASE 2
Location: 2800 NW Front Ave.
 Portland, OR 97210

Inspection: Wednesday, April 12
 by appointment only

SALE CLOSING
Thursday, April 13
9 AM PT

34,000 LB CAP.


Phase Two - Waldrich Siegen Bridge Mill, (2) G&L MC60 HMC's, G&L 38" VTL w/ Pallet Shuttle, G&L 10VFS Traveling Column VMC, Radial Drills up to 8', Welding Dept., Large Qty of Tooling Cabinets, General Fabrication, Hyster Forklifts up to 34,000 lb, Motor Testing up to 12,000 hp, Floor Standing Jib Cranes, Inspection, Plant Support & Large Scrap Opportunity

**For more
information
contact:**
Jennifer Reiner at +1 (847) 545-6374
jennifer@perfectionindustrial.com
**PRE-AUCTION
OFFERS INVITED
FOR MAJOR ASSETS**

In conjunction with


D. M. Dennett & Associates, Inc.

Public Auction

Saturday, April 22nd, 11AM • 925 Sunshine Lane, Suite 1050 • Altamonte Springs, FL 32714
CUSTOM FABRICATION FACILITY & NEW RESTAURANT EQUIPMENT!

Owner has commissioned our firm to sell all equipment & inventory of this late model metal fabrication facility, plus great selection of new food service equipment items, piece by piece, to the highest bidder(s). All equipment is in excellent condition and will be under power for inspection. Real property has been sold, so everything must BE SOLD!

FABRICATION & SHOP EQUIPMENT

- 2018 BODOR model P3015 laser cutting system w/ P Series protective enclosure, 1KW BODOR PRO 2.0 CNC controller w/ 32" LCD screen, 40FR-40HQ, WiFi wireless controls, 8 work stations, auto nozzle changer, chiller, dust removal system, laser fume filter, large shuttle table, 3048mm x 1524mm working area, monitor cameras, extra lenses-nozzles-consumables, etc. ser:R0F-1811041
- 2018 Hoston model WII-4X1500 power slip rolls, 6" x 60" triple rolls, 10ga. capacity, control pedestal, ser: 181003
- 2018 QF model 28Y-4/200 hyd. V notcher, 8" x 10ga. capacity, foot controls
- 2018 Shop Sabre CNC plasma cutting system, Hypertherm power max 45XP plasma cutter, 66" x 134" cutting table, 8" height capacity, 5/8" cut capacity
- 2017 Grizzly model G0542 box & pan brake, 4" width x 12ga. capacity
- 2018 Rigid model 535 Series auto chuck power pipe threader w/ stand, 1/2" - 2" capacity, foot control, 110v
- 2018 Klutch model 49671 4" power pipe threader w/ stand, 1/2" - 4" capacity, foot control, 110v
- 2018 Hypertherm Max 350 plasma cutter, 1/2" capacity
- 2018 Hobart "Handler" 210MVP Mig welder w/ stand
- 2018 HTP Pro Pulse 200 Mig Tig w/ Klutch stand
- 2018 Alpha-116 200x welder Tig/Stick w/ Klutch stand

- Strong Hand Build Pro model TM54738 welding table, 38" x 47' x 5/8" table, ser: TM170776
- 2018 Max model APP4V1043T air compressor, 10hp., 80 gallon vertical tank, air dryer, 220v 1ph.
- New Quincy model QT-7.5 air compressor, 7.5 hp., 80 gallon vertical tank, 220v 3ph. (Never been installed, still mounted on factory skid)
- Saw Stop model PCS31230 3 hp. 10" table saw w/ 52" T glide fence, ser: P164934429, 220v 1ph.
- Porter Cable floor model drill press w/ laser
- Central 4" x 12" combi disc/belt sander
- Central 7" horizontal band saw
- 16" wide adjustable arm cantilever steel storage rack
- Pittsburgh portable gantry w/ 1 ton electric winch, 99"-147" height capacity w/ casters
- 500 lb. capacity hyd. lift table
- Eastwood contour set
- 4 HPC-20 steel plate lifts
- Midwest Industries "Eagle" stud welding system
- 9 sections of 12" tall pallet racking, 4" & 12" cross beams
- Assorted metal stock, sheet, square, round, angle, diamond plate, tube, etc. plus 1/2" - 12" poly board
- Assorted miller saws, spot welder, shop fans, shop tables, banding cart, shop racks, grinders, riveters, roller stands, clamps, etc.

FORKLIFT

- Hyster 455 forklift, 4,500 lb. capacity, 187" triple mast, side shift, 48" forks, solid hard tire, LP

RESTAURANT EQUIPMENT
Great selection of NEW restaurant equipment & supplies.

- S.S. Oriental 72" BBQ display
- S.S. Oriental 84" BBQ display
- 20+ Assorted 2'-3'-4'-5' & 6' drop in steam table units
- 2 S.S. 4' wide x 6' tall curve glass front bakery display cases
- Ice type 3" insulated seafood merchandiser
- 2 S.S. spiral vertical chicken roasting units, (1) gas & (1) elec.
- 2 Model ZY-300 sugar cane presses
- APW gravity feed toaster
- 4 XBU ice shavers/snow cone machines
- 2 Star sandwich steamers
- 2 Meat marinated
- 2 Cotton candy machines
- Car top sign
- Insulated ice bin
- 3 Vegetable cutters
- Hardware storage bins
- Assorted 2'-3'-4'-5' & 6' insulated drop in bins
- 2 Water marinated
- 5 LED programmable signs
- Auto Chlor pass thru dishwasher
- MAJA power meat tenderizer
- 200+ Dishwasher glass racks
- 3 S.S. Chinese Duck ovens
- 2 S.S. 8' island design buffet lines w/ sneeze guard
- 2 Walk in cooler/freezer doors w/ frame
- 2 36" Teppanyaki flat grills w/ stand
- 2 Gold 5' tall entry lions w/ base
- S.S. chicken defrosting basin
- S.S. 2 burner gas stove w/ 24" flat grill & bottom oven
- 3 Assorted 12' long wall design pub tables w/ bases & stools
- 2 S.S. 5' dry bakery display cases
- 2 S.S. curve glass 4' wide gelato cases, 6 pan design
- 2 S.S. Insulated 6' cold buffets w/ traditional sneeze guard
- S.S. Euro style 4' curve glass steam table w/ 2 level
- 4 S.S. 4' dbl. sided 3 well steam tables w/ sneeze guard
- S.S. 6' dbl. sided 5 well steam table w/ sneeze guard
- S.S. Euro style 5' curve glass steam table
- S.S. 4' steam table w/ traditional sneeze guard
- 2 S.S. Euro design 60" 4 pan steam table w/ curve glass sneeze guard
- 3 S.S. 42" 6 hole gas steam tables

- 4 S.S. 42" 6 hole electric steam tables
- 2 S.S. Counter top 60" 8 apr steam tables
- 3 S.S. 30" electric salamanders
- 2 S.S. 15" electric radiant char grills
- 3 S.S. 18" electric cheese melters, adj. rack
- 2 S.S. 24" electric cheese melters, adj. rack
- 2 S.S. hot food roasterie merchandisers
- S.S. 18" & 24" electric pasta cookers
- S.S. gas 4 burner stove w/ stand
- S.S. Counter top electric Chinese smoker
- S.S. Cuban patty warmer/displays
- S.S. odd size corner table
- S.S. 7" turbo wok, 2 front burners, 2 rear burners
- S.S. Rice noodle/pasta machine
- Custom 7' Grab-n-go refrigerated merchandiser
- S.S. Space ship design Chinese smoker
- 3 S.S. Shaved ice/snow cone machines
- Custom quality 6' refrigerated chocolate/candy/bakery display w/ bottom storage
- S.S. 66" single wok w/ pasta/fry station
- 2 S.S. gyro vertical broilers
- Custom 3' x 3' chicken char grill
- 2 Kaiwili sealing/label machines
- **MUCH MORE - CHECKOUT WEBSITE**

For details & photos go to [Auctionzip.com](https://www.auctionzip.com) enter ID# 21770
REMOVAL: SALE DAY UNTIL 4PM, MON. 4/24 THRU WED. 4/26, 9AM-4PM. LASER REMOVAL BY APPOINTMENT.
Auction Services
Appraisal Services
Asset Disposal
Real Estate
Commercial Or Personal
Accelerated Marketing
Specialist

D. M. Dennett & Associates, Inc.
AUCTIONEERS

P.O. Box 6488, Deltona, Florida 32728

"Service thru professionalism is our standard"

FLA. LIC. NO. AU-293/AB-154/AB-454

(407) 322-1464

Member:
National Auctioneers
Association
&
Florida Auctioneers
Association

LIVE WEBCAST AUCTION

ONLINE ONLY

**PERFECTION
Industrial Sales**

perfection.global/auctions

Surplus to the Ongoing
Operations of**ELKAY**

Plumbing Products Company - Ogden, UT

SALE DATE**Thursday, April 27
9 AM MT****Location:** 551 Depot Drive
Ogden, UT 84404**Inspection:** Wednesday, April 26
from 9:00 AM to 4:00 PM MT, by appt. only

FEATURING: 2005 Macrodyne W205540 450 Ton Hydraulic Press, (2) Alliance Aquamaster Monorail Parts Washers, 2022 Barnes Filtration System, Hydroflow Filtration System, (15) Fanuc R-2000iA Robots, AID 8,000 lb Blank Flipper, Kalmar Ottawa 4x2 Yard Spotter, Water Treatment Systems, Plant Support Equipment, and More. **ALSO:** Over 100,000 Lb 301 2D Stainless Steel Coil Stock Available!

PRE-AUCTION OFFERS INVITED FOR MAJOR ASSETS**For more information contact:****Jennifer Reiner at +1 (847) 545-6374 or jennifer@perfectionindustrial.com**

BAY AREA AUCTION SERVICES
8010 US HWY 19 N • PINELLAS PARK, FL 33781
(727) 548-9303

ABSOLUTE ASSIGNOR ORDERED AUCTION

"SUNNY FLORIDA DAIRY"

TUESDAY, MAY 9TH, 2023 • 10:00 AM**LOCATION: 2209 N 40TH STREET • TAMPA, FL 33605****PREVIEW: TUESDAY, MAY 9TH AT 8:00 AM DAY OF SALE****727-548-9303 • www.bayareaauctionservices.com**

ON BEHALF OF THE COURT APPOINTED ASSIGNOR, WE HAVE BEEN COMMISSIONED TO SELL THE ENTIRE ASSET INVENTORY OF THIS DECADES OLD DAIRY DISTRIBUTION TO THE HIGHEST BIDDERS REGARDLESS OF PRICE AT LIVE AND LIVE INTERNET PUBLIC ABSOLUTE (NO MINIMUMS) AUCTION! 100+ REFRIGERATED BOX TRUCKS/REFRIGERATED SEMI TRAILERS & ROAD TRUCKS + TOOLS & EQUIPMENT SELL AT AUCTION PRICES! WHY PAY RETAIL?!!

20'/24' REFRIGERATED BOX TRUCK W/ LIFTGATE: Freightliner (17), International (43), Mitsubishi (17)**ROAD TRUCKS:** Freightliner (5), International (2), Yard Truck W/ Power 5th Wheel**THERMO KING 53" REFRIGERATED SEMI TRAILERS & STORAGE TRAILERS:** 42 Refrigerated Trailers, 8 Storage Trailers

INDUSTRIAL EQUIPMENT: Pallet Racking, Folding Aluminum Racking, Crown Elec Pallet Jacks (Several), Rollerbed Tables, Commercial Paper Shedders, Lockers, Exide Workhog Forklift Battery + Other Chargers, 5k B Cap Electric Forklifts (2), Cat Electric Walk Behind Forklift, Frozen Treat Merchandisers, Freezers, Pallet Jacks, Poly Pallet Storage Tanks, Cut Off Saw, Hand Trucks, Parts Cabinets, Torch Sets, Parts Washer, Jack Stands, Large Fuel Storage Tank, Truck Tires, Auto Floor Lift, Heavy Duty Bumper Lift, Ingersoll Rand Industrial Air Compressor, Dsl. Engine Parted Transmissions, Truck Fuel Tanks, Rolling Step Ladders, Tools/Parts/Supplies & More!



**We Can Fabricators COMPLETE Dispersal Liquidation
Metalworking Equipment, Welders, Truck, Trailers**

**AUCTION BEGINS TO END AT 6:00 PM
ON MONDAY, APRIL 17TH**

49425 E Park Dr • Tupper's Plains OH 45783

PREVIEW: Friday, April 14th • 2PM - 4PM

PICKUP: Wednesday, April 19th • 9AM - 5PM



HIGHLIGHTS INCLUDE:

- 2016 Chevy Silverado
- Several Welders
- Ironworker
- Daewoo D50 Forklift
- 3 Trailers
- Paint Booth
- Connex Box
- Jib Cranes
- Overhead Crane
- Air Compressor
- Bandsaws
- Wellsaw Band Saw
- Dozens of Hand Tools
- Power Tools
- Welding Cables
- Testing Tools
- And So Much More.

**Nearly 400 Lots to
Choose From, See Complete
List on Website.**



www.Kaufman-Auctions.com

TERMS & MORE AVAILABLE ONLINE

(888) 852-4111

**ONLINE ONLY AUCTION
INDUSTRIAL & COMMERCIAL
TOOLS & EQUIPMENT**

**BIDDING WILL END ON
MONDAY, APRIL 17TH AT 4:00 PM**

LOCATION: 395 Martin St • Greenville, OH 45331

**INDUSTRIAL & COMMERCIAL SHOP EQUIP. –
COMMERCIAL RESTAURANT EQUIP. –
CAT FORKLIFT – SEWING/STITCHING EQUIP.**



CAT C5000 forklift; Presto Elec. Warehouse lift; Reece Folding Machine; Commercial grinders; Foremost Chipper; Welders; Challenger planer; Tornado dust collection system; Reel winder; Weltron wrapping machine; Devilbiss 3 phase 5HP hydraulic pump systems; Commercial elec. Motors; Ransburg high voltage power supply units; 3PC Hydraulic c press system; Paint pots; Flex View laminator; Tool resistant safe; PackMaster air press; American Lincoln comm. Floor scrubber; Warehouse dollies; New/Unused Kennedy toolbox sets; Byers drawbar hitch; Multi-testers; Extension & step ladders; Hobart cyber-tig welder; Power tools; Comm. Lawn sprayers/seeder; Fluorescent ceiling/shop lighting; Lockers; HD metal desks; Comm. Restaurant & Kitchen Equip.: SS comm. sinks, wash tub, portable tray racks, & food warmers, Alvi SS commercial dishwasher; Grease traps; Parts washers; Several assorted SS vent hoods; Great Lakes heat oven; Baxter elec. Commercial food warmer; Baxter steamer/baker oven; Comm. Stitching & Sewing machines: Singer, Union, Juki, Pegasus and other brands; Fireproof file cabinets & other metal cabinets; Vending machines; Pepsi machines; Sunny tanning bed; Card file storage cabinets; Antique warehouse carts & box cars; Schoolhouse child's desks & chairs

**Midwest
Auctioneers & Realty, Inc.**
Mike Baker, Auctioneer/Broker



15% Buyer's Premium
See website for more photos, terms & conditions.
Troy Sunshade Inventory Reduction

www.midwest-auctioneers.com • 937-548-2640

WEBCAST AUCTION

Plant Closing - Former Assets of

US EQUIPMENT

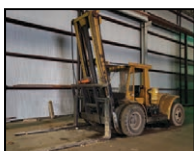
900 MEMORIAL BLVD in HUNTINGTON, WV 25701

WED, APRIL 19 at 10AM ET

Inspection - Day prior to auction from 9AM - 4PM

**COAL PREPARATION, PROCESSING &
CONVEYING EQUIPMENT MANUFACTURER**

McLanahan Crusher and Components • Crusher Rolls • Atlantic HDS12X1/2 Hyd. Shear • Pallet Racking • Forklifts to 20,000-lb. Capacity • Material Handling • Torit Dust Collector • (6) Air Compressors to 150-HP • Complete Abrasive Blasting System • Tennant Sentinel Outdoor Sweeper & Others • Welders & Welding Support • Large Welding Tables • Several Skids of Steel Plate, Bar Stock & Fabricated Steel • Dump Hoppers • Fabricating & Toolroom Equipment • Plant Support & More



18% Buyer's Premium | Thomas Bowling, WV Auction Lic. # - 2372

**MYRON BOWLING
AUCTIONEERS, INC.**

(513) 738-3311 | MyronBowling.com

Former Industrial Machine & Tool Co



Previews: Wed, April 26 (11am-3pm) & Mon, May 1 (3-6pm)



SHERIDAN Questions?
REALTY & AUCTION CO. Call us!

(517) 676-9800

www.SheridanAuctionService.com

Upcoming Auctions

Visit our sister site!

MyEquipAuctions
.com**BidSpotter**
FIND
INDUSTRIAL
EQUIPMENT
& MORE.

Click Here

March

03/22/23 to 04/18/23	Link Auctions	ONLINE AUCTION	Hackensack, NJ	View >
03/28/23 to 04/12/23	Remedial Asset Recovery Group	ONLINE AUCTION	Prospect Heights, IL	View >

April

04/05/23	Rabin Worldwide	Time Online Auction	San Diego, CA	View >
04/06/23	Rabin Worldwide	Time Online Auction	Online	View >
04/06/23	Link Auctions	ONLINE AUCTION	Tulsa, OK	View >
04/11/23	Asset Management Group	Time Online Auction	Madison Heights, MI	View >
04/12/23 to 04/13/23	Plant & Machinery Inc.	LIVE ONLINE AUCTION/TIMED ONLI...	ABERDEEN, MD	View >
04/12/23	Machinery Network Auctions	LIVE WEBCAST AUCTION	Petaluma, CA	View >
04/12/23	Cincinnati Industrial Auctioneers	Webcast Only Auction	Online	View >
04/13/23	Perfection Industrial Sales	ONLINE AUCTION	Portland, OR	View >
04/13/23	Investment Recovery Services	ONLINE WITH LIVE SIMULCAST AUC...	Tulsa, OK	View >
04/14/23	Rabin Worldwide	Time Online Auction	Sacramento, CA	View >
04/17/23	Kaufman Realty & Auctions	ONLINE ONLY AUCTION	Tuppers Plains, OH	View >
04/18/23	Machinery Network Auctions	LIVE WEBCAST AUCTION	Elgin, IL	View >
04/18/23	Cincinnati Industrial Auctioneers	Webcast Only Auction	Indianapolis, IN	View >
04/19/23	Rabin Worldwide	Time Online Auction	Carlos, MN	View >
04/20/23	Rabin Worldwide	Time Online Auction	South San Francisco, CA	View >
04/20/23	Machinery Network Auctions	LIVE WEBCAST AUCTION	Oxnard, CA	View >
04/22/23	DM Dennett & Associates Inc	ONLINE AUCTION	Altamonte Springs, FL	View >
04/25/23	Machinery Network Auctions	Time Online Auction	Fontana, CA	View >

www.industrialmachinetrader.com/auctions/upcoming



ATTENTION ATTENTION

ONLINE PUBLIC AUCTION



SALE END DATE:

TUESDAY, APRIL 25TH • 10:00 AM MT

INSPECTIONS:

MONDAY, APRIL 24TH • 9:00 AM - 3:00 PM MT



**COMPLETE CNC AEROSPACE
MACHINE SHOP**

3832 E. Illini St.

Phoenix, Arizona 85040



**CNC MACHINING CENTERS,
TURNING CENTERS, LATHES,
EDM, CMM, LARGE QTY.
TOOLING & INSPECTION
EQUIPMENT**

Buyer's Premium: 18.00%

BidSpotter



Sale Conducted by:

The Arizona Auctioneers.

Auctioneer: Stephen M. Sommers

• AUCTIONEERS • APPRAISERS • LIQUIDATORS •

602-258-6981
PHOENIX

602-257-1935
FAX

1802 South First Avenue • Phoenix, Arizona 85003
www.arizonaauctioneers.com